

Product Data Sheet

**D Type Bolted Construction DBB
Valve Flange to Flange**



Machined from a barstock forging, this valve features two inline ball pattern primary and secondary isolating valves and a heavy duty needle vent valve.

Ball valve bore sizes from 14mm and 20mm (0.55" to 0.8").

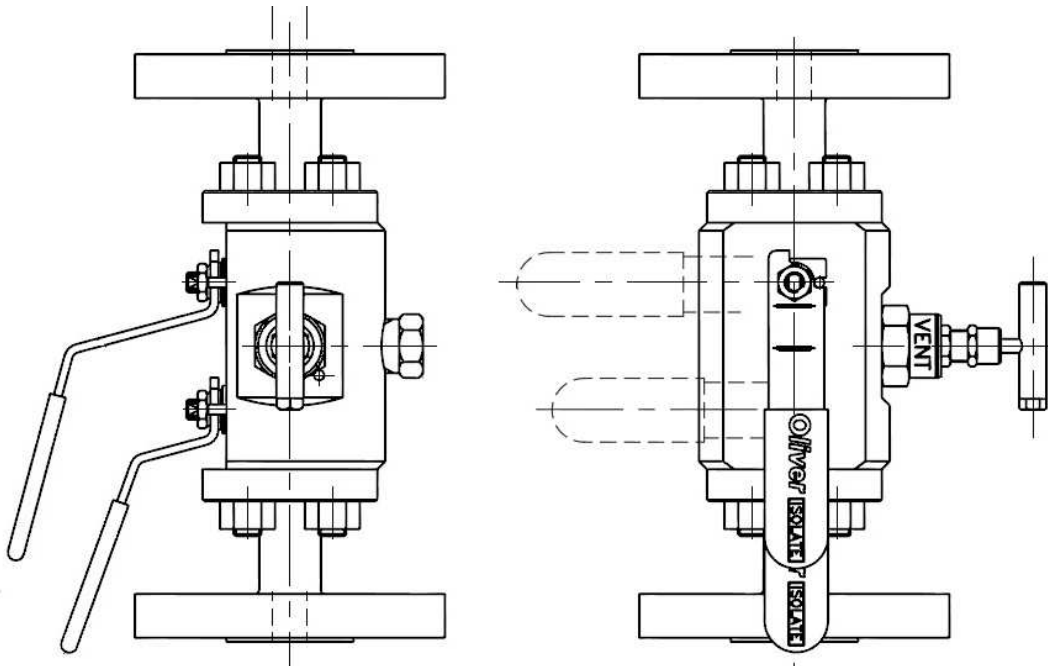
Key Features of the Oliver D Type Valve

- Compact 'grain controlled' forged double block and bleed valve
- Needle valve features non-rotating, anti galling tip
- Anti-blow out spindle
- Reduced bore ball valve
- Each valve traceable by unique number

Standard Specification

- Maximum rating 2500lb class
- Maximum temperature 240°C
- Metal to metal seated needle valve
- Soft seated ball valve

General Arrangement Drawing



Ordering Code

(Typical example) BE-DBB/D / S / X / 10 – 1500 RTJ/10 – 1500 / 50F / FS/HL/NA
→
Model / Type

Integral flange 2 ball in line and
needle vent

Material

S – Stainless steel (forged) ASTM A182
F316
C – Carbon steel (forged) ASTM A350 LF2
Other materials available on request

Bore

Y – 14mm
Z – 20mm

Flange details inlet/outlet

Flange size

50 - 1/2"
75 - 3/4"
10 – 1"
150 - 1 1/2"
200 – 2"
300 – 3"

Flange class

150 – 150lb
300 – 300lb
600 – 600lb
900 – 900lb
1500 – 1500lb
2500 – 2500lb

Flange type

RTJ – Ring type
joint
RF – Spiral finish raised face

Vent

Connection size

50 - 1/2" (std process/instrument & vent)
75 - 3/4"

Options

HL – Handle locking

Standard

NA – NACE MR-01-75 (latest revision)
FS – Firesafe to API 607 and API 6FA and BS 6755 Part 2

Rev 1.1

Product Data Sheet

**D Type integrally forged DBB Valve
Flange to Flange**



Machined from a single piece of 'grain flow controlled' forging, this valve features two inline ball pattern primary and secondary isolating valves and a heavy duty needle vent valve.

Ball valve bore sizes from 10mm, 14mm and 20mm (0.4" to 0.8").

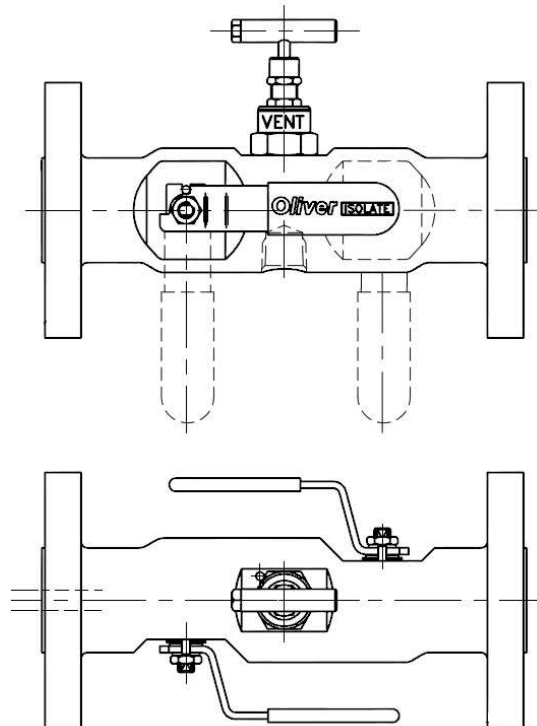
Key Features of the Oliver D Type Valve

- Compact 'grain controlled' forged double block and bleed valve
- Needle valve features non-rotating, anti galling tip
- Anti-blow out spindle
- Reduced bore ball valve
- Each valve traceable by unique number

Standard Specification

- Maximum rating 2500lb class
- Maximum temperature 240°C
- Metal to metal seated needle valve
- Soft seated ball valve

General Arrangement Drawing



Ordering Code

(Typical example) DBB/D / S / X / 10 – 1500 RTJ/10 – 1500 / 50F / FS/HL/NA
→
Model / Type

Integral flange 2 ball in line and
needle vent

Material

S – Stainless (forged) ASTM A182 F316
C – Carbon steel (forged) ASTM A350 LF2
Other materials available on request

Bore

X – 10mm
Y – 14mm
Z – 20mm

Flange details inlet/outlet

Flange size

50 - 1/2"
75 - 3/4"
10 - 1"
150 - 1 1/2"
200 - 2"
300 - 3"

Flange class

150 – 150lb
300 – 300lb
600 – 600lb
900 – 900lb
1500 – 1500lb
2500 – 2500lb

Flange type

RTJ – Ring type
joint
RF – Spiral finish raised face

Vent

Connection size

50 - 1/2" (std process/instrument & vent)
75 - 3/4"

Options

HL – Handle locking

Standard

NA – NACE MR-01-75 (latest revision)
FS – Firesafe to API 607 and BS 6755 Part 2

Rev 1.1

Product Data Sheet

**D Type integrally forged DBB Valve
Flange to Pipe**



Machined from a single piece of 'grain flow controlled' forging, this valve features two inline ball pattern primary and secondary valves and a heavy duty needle vent valve.

Ball valve bore sizes from 10mm, 14mm and 20mm (0.4" to 0.8").

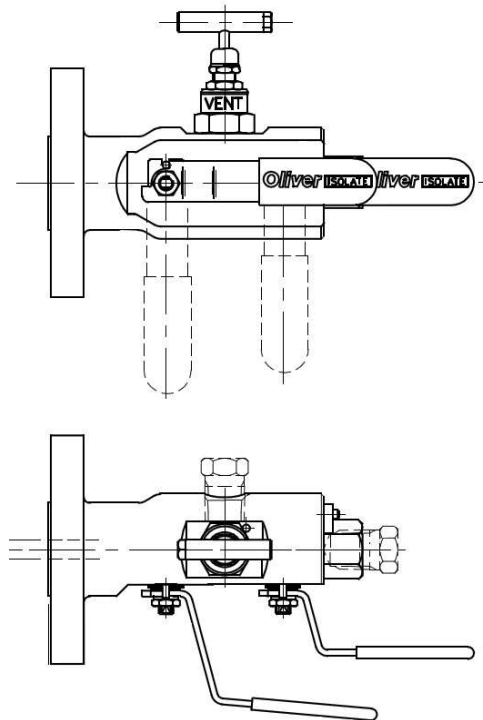
Key Features of the Oliver D Type Valve

- Compact 'grain controlled' forged double block and bleed valve
- Needle valve features non-rotating, anti galling tip
- Anti-blow out spindle
- Reduced bore ball valve
- Each valve traceable by unique number

Standard Specification

- Maximum rating 2500lb class
- Maximum temperature 240°C
- Metal to metal seated needle valve
- Soft seated ball valve

General Arrangement Drawing



Ordering Code

(Typical example) → DBB/D / S / X / 10 – 1500 RTJ / 50F/50F / FS/HL/NA
Model / Type

Integral flange 2 ball in line and needle vent

Material

S – Stainless steel - (forged) ASTM A182 F316
C – LF2 Carbon steel (forged) ASTM A350 LF2
Other materials available on request

Bore

X – 10mm
Y – 14mm
Z – 20mm

Flange details

Flange size

50 - ½"
75 - ¾"
10 - 1"
150 - 1½"
200 - 2"
300 - 3"

Flange class

150 – 150lb
300 – 300lb
600 – 600lb
900 – 900lb
1500 – 1500lb
2500 – 2500lb

Flange type

RTJ – Ring type joint
RF – Spiral finish raised face

Instrument / Vent

Connection size

50 - ½" (std process/instrument & vent)
75 - ¾"

Process connection (NPT standard)

BP – BSP parallel pipe thread BS2779-1986
BT – BSP taper pipe thread BS21 - 1985

Connection type

F – Female thread (std instrument/vent)

Options

HL – Handle locking

Standard

NA – NACE MR-01-75 (latest revision)
FS – Firesafe to API 607 and BS 6755 Part 2

Rev 1.1

Product Data Sheet

**F Type integrally forged DBB Valve
Flange to Pipe**



Machined from a single piece of 'grain flow controlled' forging, this valve features two inline ball pattern primary and secondary isolating valves and a heavy-duty ball vent valve.

Ball valve bore sizes from 10mm, 14mm and 20mm (0.4" to 0.8").

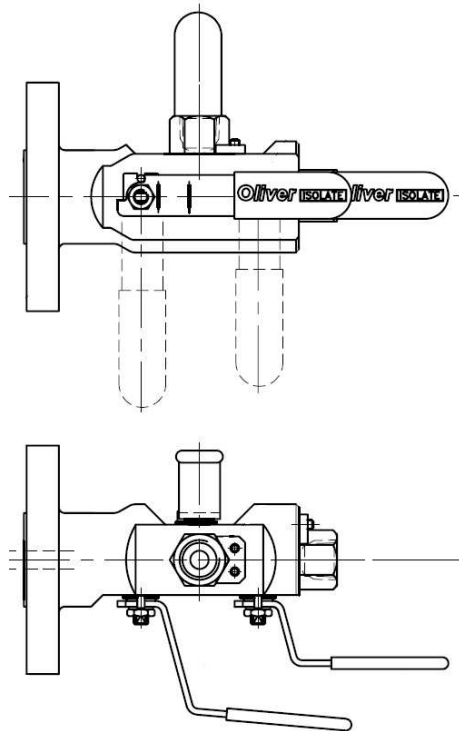
Key Features of the Oliver F Type DBB Valve Flange to Pipe

- Compact 'grain controlled' forged double block and bleed valve
- Anti-blow out spindle
- Reduced bore ball valve
- Each valve traceable by unique number

Standard Specification

- Maximum rating 2500lb class
- Maximum temperature 240°C
- Soft seated ball valve

General Arrangement Drawing



Ordering Code

(Typical example) → DBB/F / S / X / 10 – 1500 RTJ / 50F/50F / FS/HL/NA
Model / Type

Integral flange, 3 ball in line pattern

Material

S – Stainless steel – (forged) ASTM A182 F316
C – Carbon steel (forged) ASTM A350 LF2
Other materials available on request

Bore

X – 10mm
Y – 14mm
Z – 20mm

Flange details

Flange size

50 - ½"
75 - ¾"
10 – 1"
150 - 1½"
200 – 2"
300 – 3"

Flange class

150 – 150lb
300 – 300lb
600 – 600lb
900 – 900lb
1500 – 1500lb
2500 – 2500lb

Flange type

RTJ – Ring type joint
RF – Spiral finish raised face

Instrument / Vent

Connection size

50 - ½" (std process/instrument & vent)
75 - ¾"

Process connection (NPT standard)

BP – BSP parallel pipe thread BS2779-1986
BT – BSP taper pipe thread BS21 - 1985

Connection type

F – Female thread (std instrument/vent)

Options

HL – Handle locking

Standard

NA – NACE MR-01-75 (latest revision)
FS – Firesafe to API 607 and BS 6755 Part 2

Rev 1.1

Product Data Sheet

EL Type Integrally Forged DBB Valve Flange to Pipe



Machined from a single piece of 'grain flow controlled' forging, this valve features two inline ball pattern primary and secondary isolating valves and a heavy duty ball vent valve.

The EL Type can be supplied in the following styles;

- Two in-line ball pattern primary and secondary isolating valves with a heavy duty needle valve vent, offering 'through to process' rodding in bore sizes from 10mm to 20mm
- Three ball pattern primary and secondary isolating valves and vent valve offering 'through to process' rodding in 10mm and 14mm bore sizes
- Three heavy duty metal seated Needle primary and secondary isolating valves and vent valve with 5.4mm bores

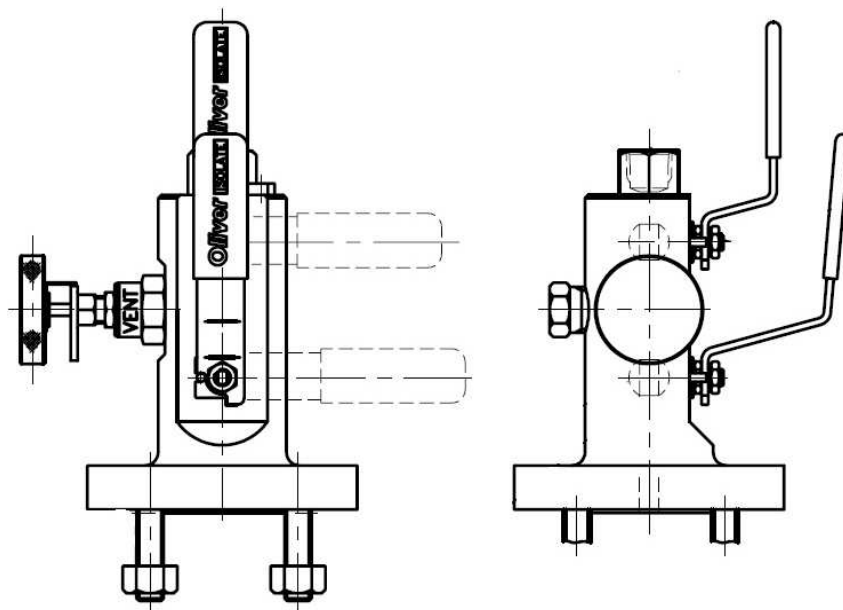
Key Features of the Oliver EL Type Valve

- Compact 'grain controlled' forged double block and bleed valve
- Anti-blow out spindle
- Reduced bore ball valve
- Each valve traceable by unique number

Standard Specification

- Maximum rating 2500lb class
- Maximum temperature 240°C
- Soft seated ball valve

General Arrangement Drawing



Ordering Code

(Typical example) DBB/DEL / S / X / 10 – 1500 RTJ / 50F/50F / FS/HL/NA

→

Model / Type

Integral flanged, 2 Ball valves and a heavy duty needle valve

Material

S – Stainless steel (forged) ASTM A182 F316
C – Carbon steel (forged) ASTM A350 LF2
Other materials available on request

Bore

X – 10mm
Y – 14mm
Z – 20mm

Flange details

Flange size

50 - ½"
75 - ¾"
10 – 1"
150 - 1½"
200 – 2"
300 – 3"

Flange class

150 – 150lb
300 – 300lb
600 – 600lb
900 – 900lb
1500 – 1500lb
2500 – 2500lb

Flange type

RTJ – Ring type joint
RF – Spiral finish raised face

Instrument / Vent

Connection size

50 - ½" (std process/instrument & vent)
75 - ¾"

Process connection (NPT standard)

BP – BSP parallel pipe thread BS2779-1986
BT – BSP taper pipe thread BS21 - 1985

Connection type

F – Female thread (std instrument/vent)

Options

HL – Handle locking

Standard

NA – NACE MR-01-75 (latest revision)
FS – Firesafe to API 607 and BS 6755 Part 2

Rev 1.1